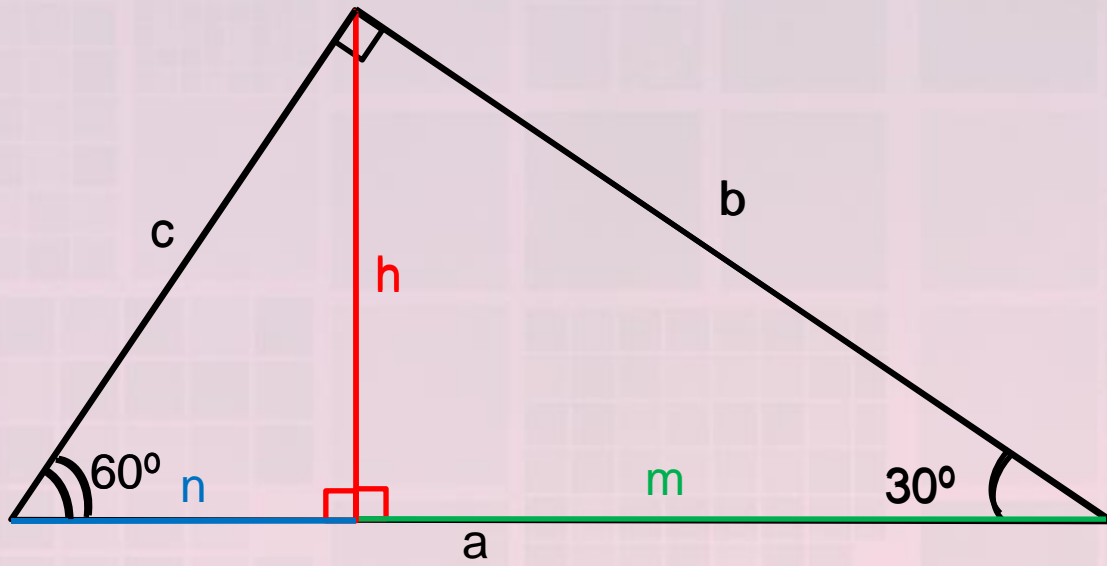


The image features a complex abstract composition. A dark purple background is overlaid with a light purple grid. Several thick, diagonal bands of color intersect: a yellow band from the top-left to the bottom-right, a red band from the top-right to the bottom-left, and a purple band from the top-left to the bottom-right. The word "MATEMÁTICA" is written in white, bold, uppercase letters, slanted to follow the path of the yellow band. The overall aesthetic is modern and geometric.

**MATEMÁTICA**

# **Relações Métricas no Triângulo Retângulo**

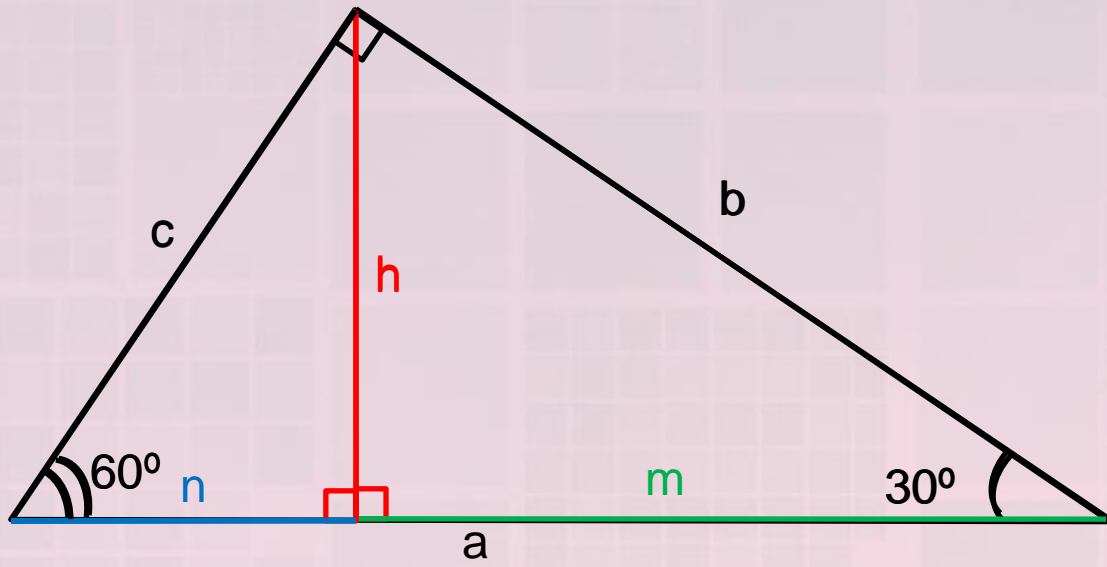
## **Teorema de Pitágoras**



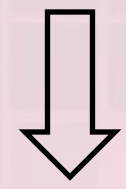
$$\frac{c}{n} = \frac{a}{c}$$



$$c^2 = a \cdot n$$

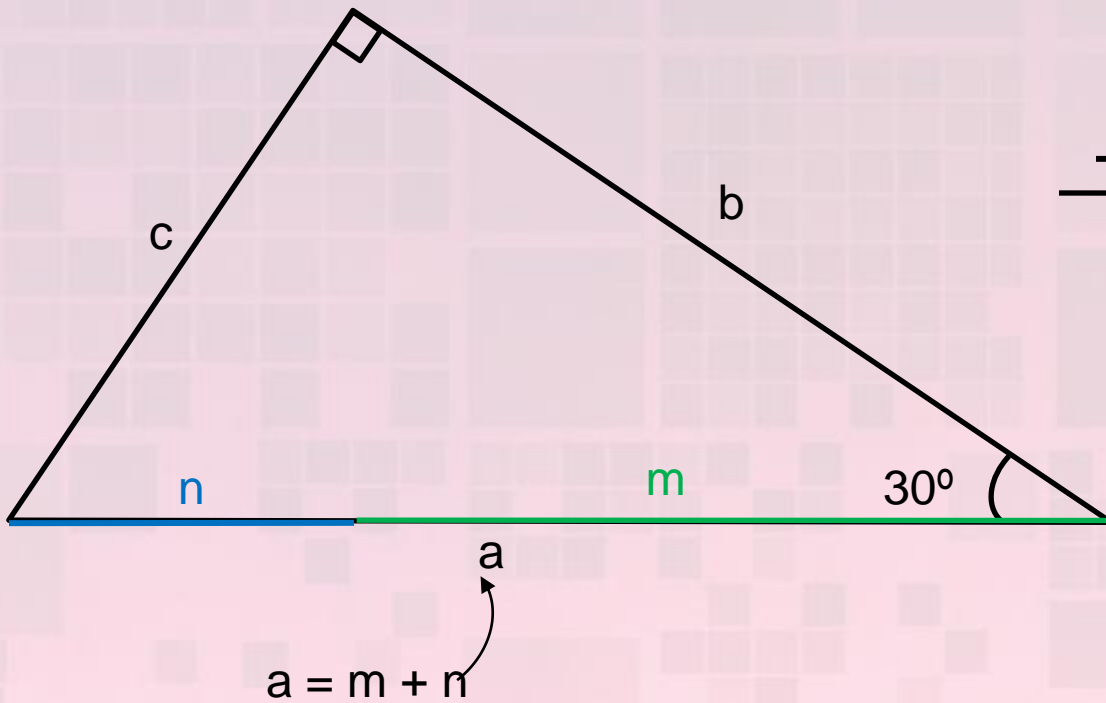


$$\frac{b}{a} = \frac{m}{b}$$



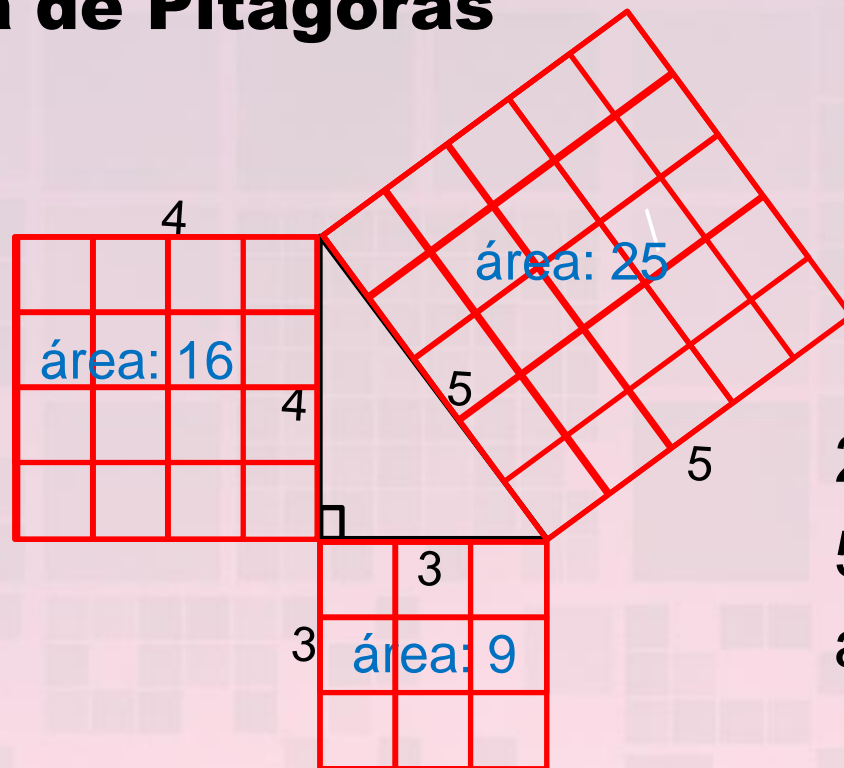
$$b^2 = a \cdot m$$

$30^\circ$



$$\begin{array}{r}
 b^2 = a.m \\
 + \quad c^2 = a.n \\
 \hline
 b^2 + c^2 = a(\underbrace{m + n}_a)n
 \end{array}$$

# Teorema de Pitágoras



$$25 = 16 + 9$$

$$5^2 = 4^2 + 3^2$$

$$a^2 = b^2 + c^2$$

